



– DATASHEET

Release Notes R1 2021

MAXIMIZER™CRM





SQL 2008 and SQL 2008 R2 do not work with 2021 R1 release

If you are still running SQL 2008 or SQL 2008 R2, you cannot install **MAXIMIZERCRM** 2021 R1. The minimum requirement for database server is SQL 2012.

SAML Based SSO

Maximizer's SSO capabilities use SAML 2.0 standards which are supported by most major Identity Providers. Configuring Maximizer to use SSO requires knowledge of the third party Identity Provider being used, security certificates, and other system administrator type skills. If you are unsure of how to gain the required configuration information, please refer to your systems administrator, third party Identity Provider documentation, or other content readily available online. Maximizer will not provide any third party identity provider support.

If you would like to use SAML based single-sign on to access **MAXIMIZERCRM**, you must test login using your Identity Provider (IDP) and ensure you can login successfully before turning off Maximizer login. If you turn off Maximizer login and your IDP has a problem, you will not be able to log in to **MAXIMIZERCRM**.

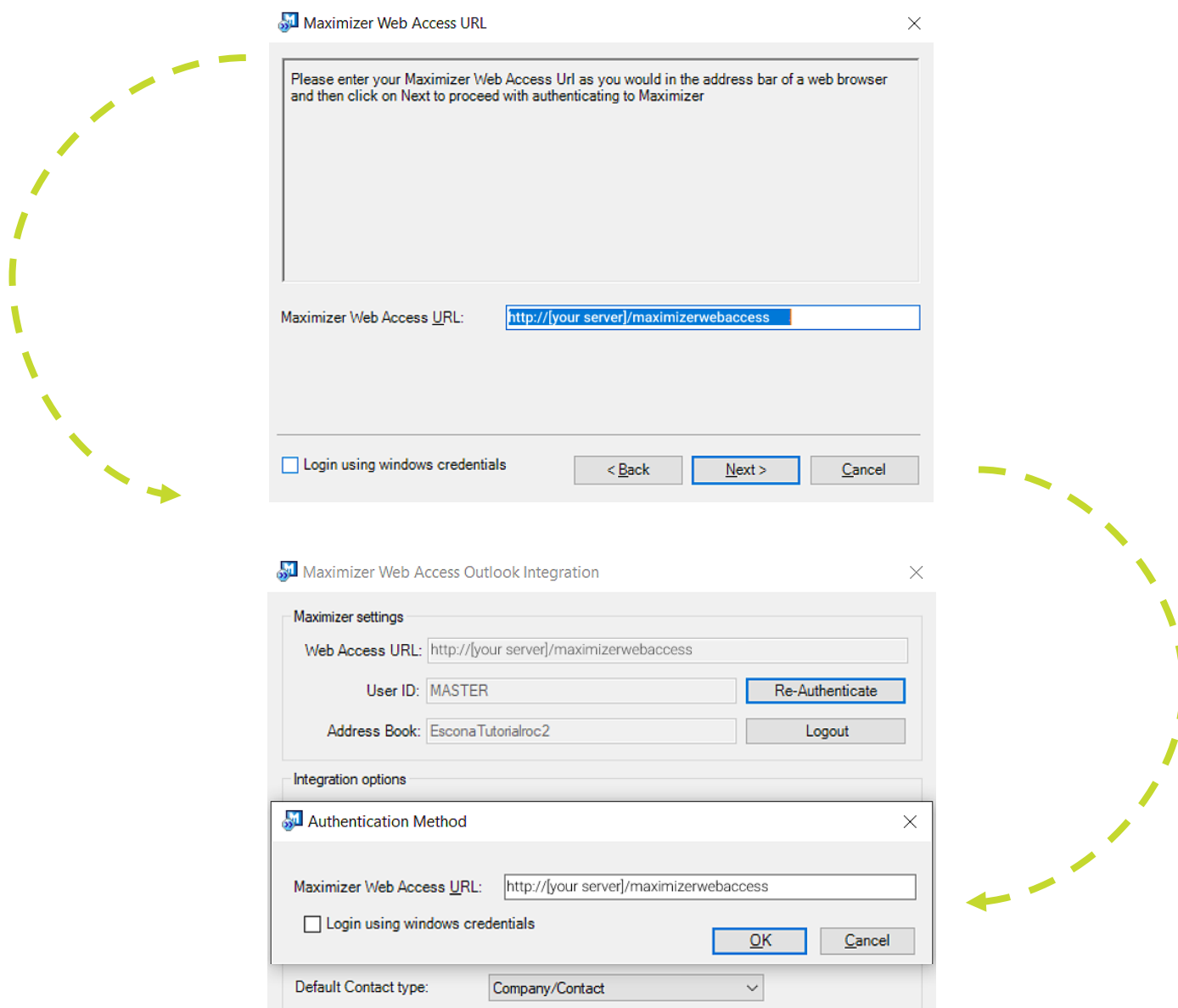
SAML SSO for logging in to Windows Administrator and Customization Suite is not supported. You can always log in to those two modules using Maximizer login credential.

[Click here to download the guide for setting up SAML SSO in Maximizer.](#)

Outlook add-in

Moving forward, Outlook Add-in will only allow users to authenticate to a Maximizer account using OAuth workflow, provided that the user's Maximizer account is 2021 R1 and the latest Outlook build has been installed. If a Maximizer account has been setup with SAML IDP, the Outlook Add-in will allow the user to login through their configured IDP.

For On-Premise users who have Windows Authentication setup for their Maximizer account, they would need to enable the checkbox "Login using windows credentials" in order to authenticate the Outlook add-in. This option is available when authenticating either through the main wizard or from the Preferences dialog.



Note

The existing version of the Outlook add-in works with 2021 R1 release. To get the new version of the Outlook add-in, go to App Directory > Outlook.

Discontinued features

Draw a map – The intermedia dialog has been removed. Clicking the command will open the Google Maps and show the address. You can plan your route inside Google Maps.

Search menu > Web – This menu item has been removed.



Experience **MAXIMIZER™CRM**

MAXIMIZER™CRM helps small and medium-sized teams consistently overachieve their business goals with centralized, easy-to-use and powerful views of their business data - all in one tab.

Free Trial

Copyright 2021 Maximizer Services Inc., Maximizer Software Ltd., Maximizer Software Solutions Pty. Ltd. All rights reserved. Maximizer CRM is a registered trademark of Maximizer Software Inc. This is for information purposes only, MAXIMIZER SOFTWARE INC. MAKES NO WARRANTIES, EXPRESSED OR IMPLIED IN THIS SUMMARY.